

SEVEN TROUGHS CLAIM BLOCKS
SUMMARY

Seven Troughs Mountain Range
Pershing County
Nevada

by
Randall K. Stoeberl
Mineral Exploration Geologist
15770 Fawn Lane
Reno, Nevada 89511
(702) 849-0283

January 4, 1995

INTRODUCTION:

The claim blocks are located in the Seven Troughs Mountain Range ~40 miles northwest of the town of Lovelock in Pershing County, Nevada. Historically, gold was discovered in the Seven Troughs Canyon in the 1800's. Very high grade (multi oz. per ton) gold ore was mined in the Seven Troughs and Farrell Districts. These mines were sporadically worked through 1970. The claim blocks Primus Resources own are in the Farrell District.

GEOLOGY:

Rocks in the claim blocks include, granodiorite (basement), Auld Lang Syne metasediments, rhyolite, andesite, pyroclastic tuffs, silicified breccias, and Tertiary sediments.

ALTERATION/MINERALIZATION:

The alteration is quartz, adularia epithermal. Alteration and mineralization is found in all the rock types. Bleaching and clay alteration is most common. The most intense argillic alteration occurs near the silicified breccias and around vein swarms.

Silicification occurs adjacent to veins into the country rock and also in breccias. These breccias may be vents and pipe like in nature (?). These pipes (?) may be the source of the wall rock preparation and mineralization.

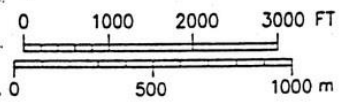
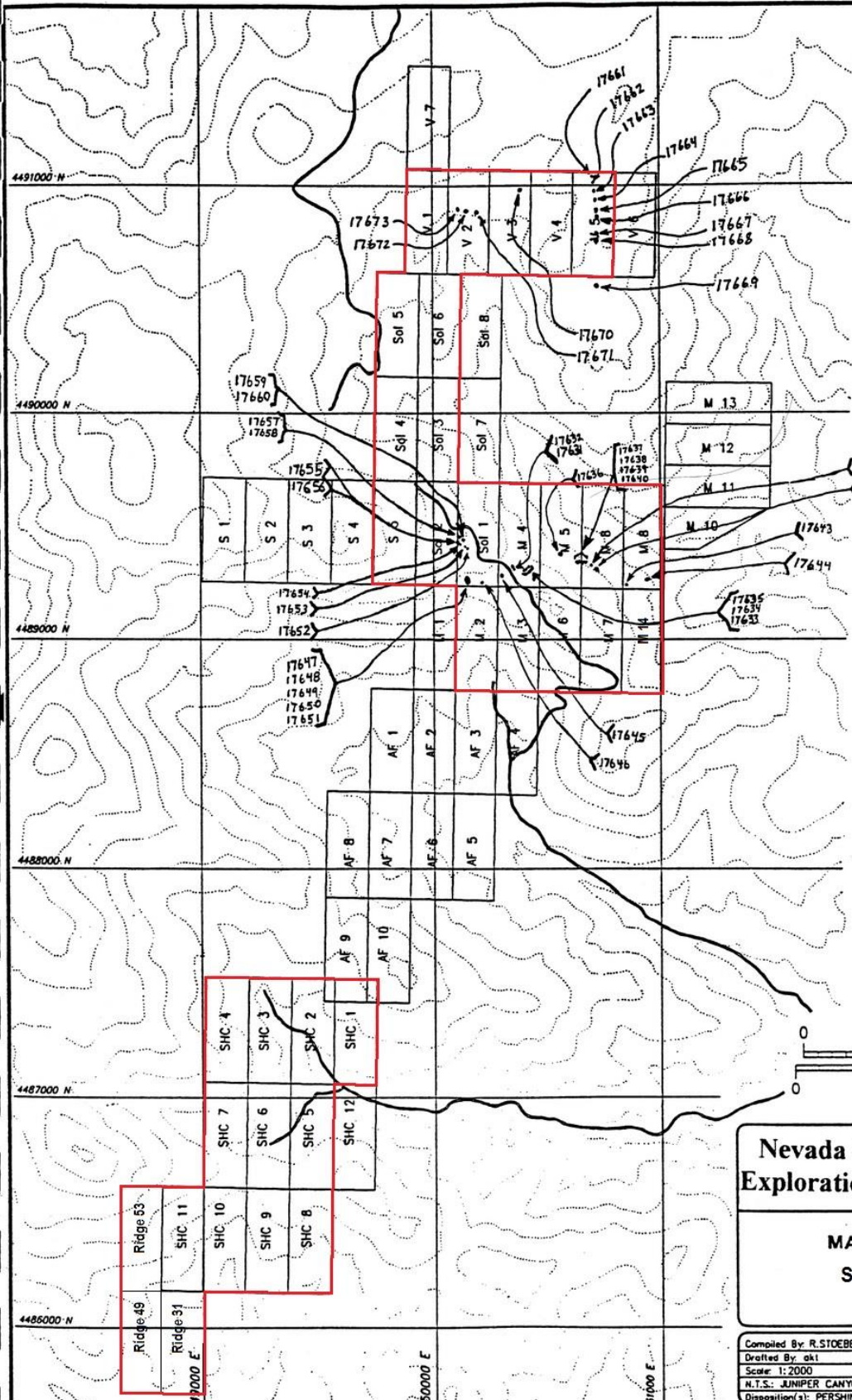
Gold mineralization occurs near and in the most intense silicified and argillized altered areas. Some rock chips in the area have exceeded .5 opt (14.2 grams/t) gold.

STRUCTURE:

The regional structure may be that of an nested oval shaped volcanic vent complex which occupies an area at the surface roughly three miles (4.8 km) east and west and may be possibly greater than 1.5 mile (2.4 km) north to south. This large oval structure has venting features (which may be Maar like) all around in periphery.

POTENTIAL:

The exploration potential is very good. The possibility of a low grade heap leach operation and/or high grade bonanza style mineralization exist. The Wildcat resource (1.15 MM oz.) is less than one mile (1.6 km) and on the same structure.



Nevada Gold NEVADA
Exploration, Inc. GENERATIVE

MARS PROPERTY
Sample Locations

Compiled By: R.STOEBERL 1/1/96
 Drafted By: akt
 Scale: 1:2000
 N.T.S.: JUNIPER CANYON 7.5
 Disposition(s): PERSHING CO., NV

Dwg No.: MR95100
 Updated 6/27/14 by T.N.



Chemex Labs, Inc.

Analytical Chemists * Geochemists * Registered Assayers
 994 Glendale Ave., Unit 3,
 Nevada, U.S.A.
 Sparks 89431
 PHONE: 702-356-5395 FAX: 702-355-0179

To: PRIMUS RESOURCES
 3600 HARTSTRAND GULCH
 ETNA, CALIFORNIA
 96027
 Project: VENUS/MARS
 Comments: CC: RANDY STOEBERL

Page Number : 1
 Total Pages : 2
 Certificate Date: 15-DEC-95
 Invoice No. : 19535615
 P. O. Number :
 Account : MEF

CERTIFICATE OF ANALYSIS A9535616

SAMPLE	PREP CODE	Au ppb FA+AA	Au FA oz/T						
17631	205 226	115	-----	VENUS Central Canyon	VENUS				
17632	205 226	475	-----						
17633	205 226	575	-----						
17634	205 226	280	-----						
17635	205 226	375	-----						
17636	205 226	50	-----	MARS Claim block					
17637	205 226	75	-----						
17638	205 226	15	-----						
17639	205 226	80	-----						
17640	205 226	185	-----						
17641	205 226	145	-----	MARS Claim block					
17642	205 226	495	-----						
17643	205 226	615	-----						
17644	205 226	530	-----						
17645	205 226	1700	-----						
17646	205 226	35	-----	VENUS Central Canyon	VENUS				
17647	205 226	2920	-----						
17648	205 226	620	-----						
17649	205 226	165	-----						
17650	205 226	3170	-----						
17651	205 226	355	-----	VENUS Central Canyon	VENUS				
17652	205 226	150	-----						
17653	205 226	205	-----						
17654	205 226	35	-----						
17655	205 226	75	-----						
17656	205 226	85	-----	VENUS Central Canyon	VENUS				
17657	205 226	3600	-----						
17658	205 226	>10000	1.640						
17659	205 226	>10000	0.416						
17660	205 226	1450	-----						
17661	205 226	1400	-----	VENUS Central Canyon	VENUS				
17662	205 226	190	-----						
17663	205 226	105	-----						
17664	205 226	120	-----						
17665	205 226	85	-----						
17666	205 226	55	-----	VENUS Central Canyon	VENUS				
17667	205 226	50	-----						
17668	205 226	15	-----						
17669	205 226	60	-----						
17670	205 226	15	-----						

CERTIFICATION:

[Handwritten signature]