

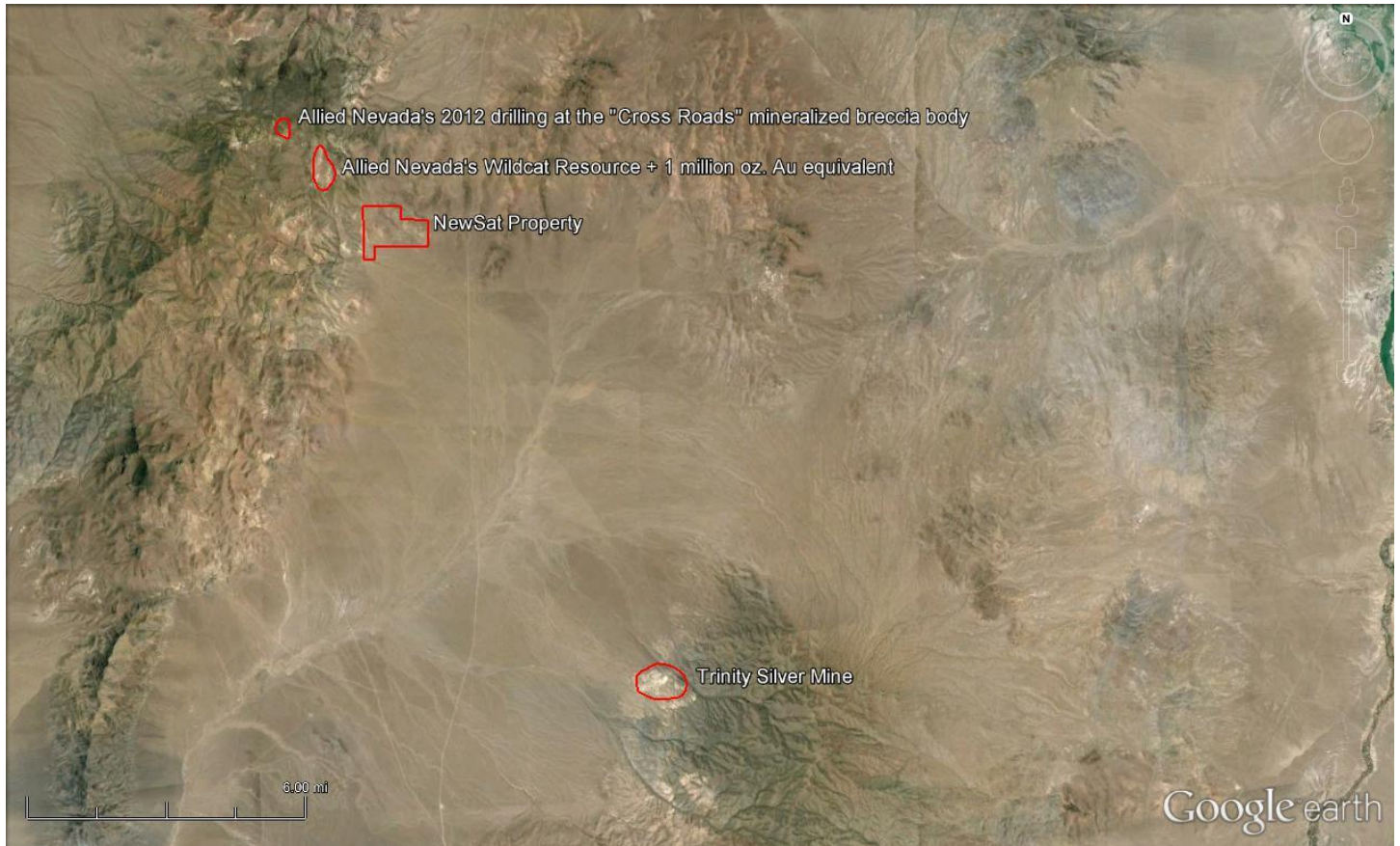


Allied Nevada's Wildcat Property description from Allied Nevada's website:

The (Wildcat) property contains at least two aerially extensive breccia bodies located at the intersection of through-going fault zones. Four areas; Hero/Tag, Main, Northeast, and Knob 32 are located within the southern breccia body and contain the majority of drilling and all of the known resource. These four areas are geologically similar with mineralization straddling the contact between granodiorite and overlying tuff within the breccia body. Mineralization hosted in the tuff generally tends to be lower grade disseminated style of mineralization represented by pervasive and intense silicification. The underlying granodiorite also contains low-grade disseminated style of mineralization with areas of higher-grade associated with quartz vein stockwork. Generally, the granodiorite has higher grade and is not silicified. Any silicification is restricted to adjacent veins and veinlets. Peripheral to the breccia bodies, discrete mineralized banded veins in the granodiorite were exploited by historical mining and were generally not targeted by drilling. Deeper roots to the mineralized breccia bodies also have not been explored. A second aerially extensive mineralized breccia body is located 0.9 miles to the northwest in the Cross Roads area and is predominantly defined by surface samples only.

(end of Wildcat Property description from www.alliednevada.com)

2Prospectors NewSat Property covers a mineralized breccia body located SE of the main Wildcat Resource area. Cretaceous granodiorite outcrops at surface on or near the southern edge of the NewSat Property and overall geology, alteration and mineralization within the breccia bodies appears to be similar to the very nearby Wildcat Property which hosts a mineral inventory greater than 1.2 million ounce Au equivalent at this time.



Liberty Silver's Trinity Mine is situated about 11 miles SE of the NewSat Property. The apparent linear relationship between the mineralized zones in the air photo may be purely coincidental. The silver mineralization at the Trinity Silver Mine is largely contained within altered Tertiary rhyolite, rhyolite tuffs and breccias in an epithermal environment.