

RECEIVED
BUR. OF LAND MGMT.

SEP 14 9 02 AM '88

SACRAMENTO, CALIFORNIA

REPORT ON

LAUREN CLAIMS

CAMPO SECO

CALAVERAS COUNTY

CALIFORNIA

FOR

STRONGBOW RESOURCE CORPORATION

930 - 609 Granville Street

Vancouver, B.C.

V7Y 1G5

R.H. SERAPHIM, Ph.D., P.Eng.

December, 1987

SUMMARY AND CONCLUSIONS

The Lauren claims are located a few miles west of the Motherlode Belt, California. They cover two outcroppings of gold quartz mineralization. Tertiary conglomerate appears to cap the quartz zones, which are believed to be continuous under the cap. The exposed zones average about 100 feet wide; the northwest exposure is about 1,900 feet long; and the southwest zone about 600 feet long.

The exposures have been sampled by several companies, with results compiled on maps supplied herewith. The numerous assays in the range of 0.02 to 0.04 ounces gold per ton, (0.6 to 1.2 ppm approximately) with a few in the 0.04 to 0.1 ounce range (1.2 to 3 ppm approximately) indicate that parts of the exposures may be profitable in a heap-leach operation.

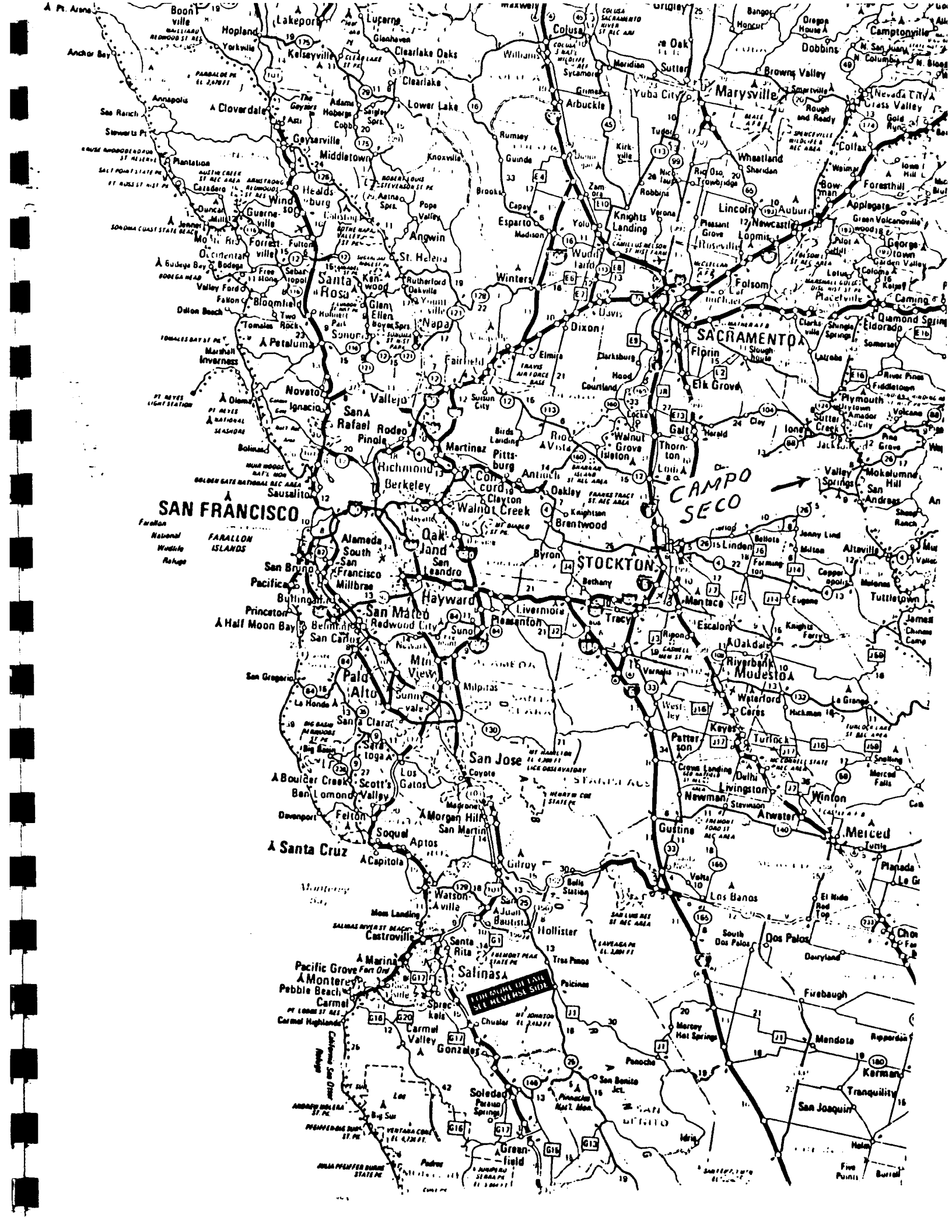
A couple of diamond drill holes were completed, providing some samples that assay within the ranges reported above. The drill hole logs, however, do not provide enough information to permit a plot of the assayed intercepts on a plan.

RECOMMENDATIONS AND COSTS

A program of percussion drilling with associated sampling at say 10 foot intervals is recommended. Holes should be laid out on grid lines across the trend of the exposures. Lines can be laid out initially at about 200 foot spacings, with 3 holes per line, to give about 24 holes (18 in north exposure, 6 in south exposure) to 200 feet depth. The total is 4,800 feet of hole. 'All in' costs should be about \$15 per foot or about \$72,000. Layout should be mathematical to ensure sampling without bias.

INTRODUCTION

The Lauren claims at Campo Seco, a few miles west of the Motherlode Belt in California, were examined on April 10, 1987. Tom Thomas and Richard Naylor, both of whom had previous experience on the property, acted as guides. Data



SAN FRANCISCO

CAMPO SECO →

STOCKTON

MARTELL

MARTELL

MARTELL

MARTELL

MARTELL

MARTELL

MARTELL

MARTELL

MARTELL

MARTELL

MARTELL

MARTELL

MARTELL

MARTELL

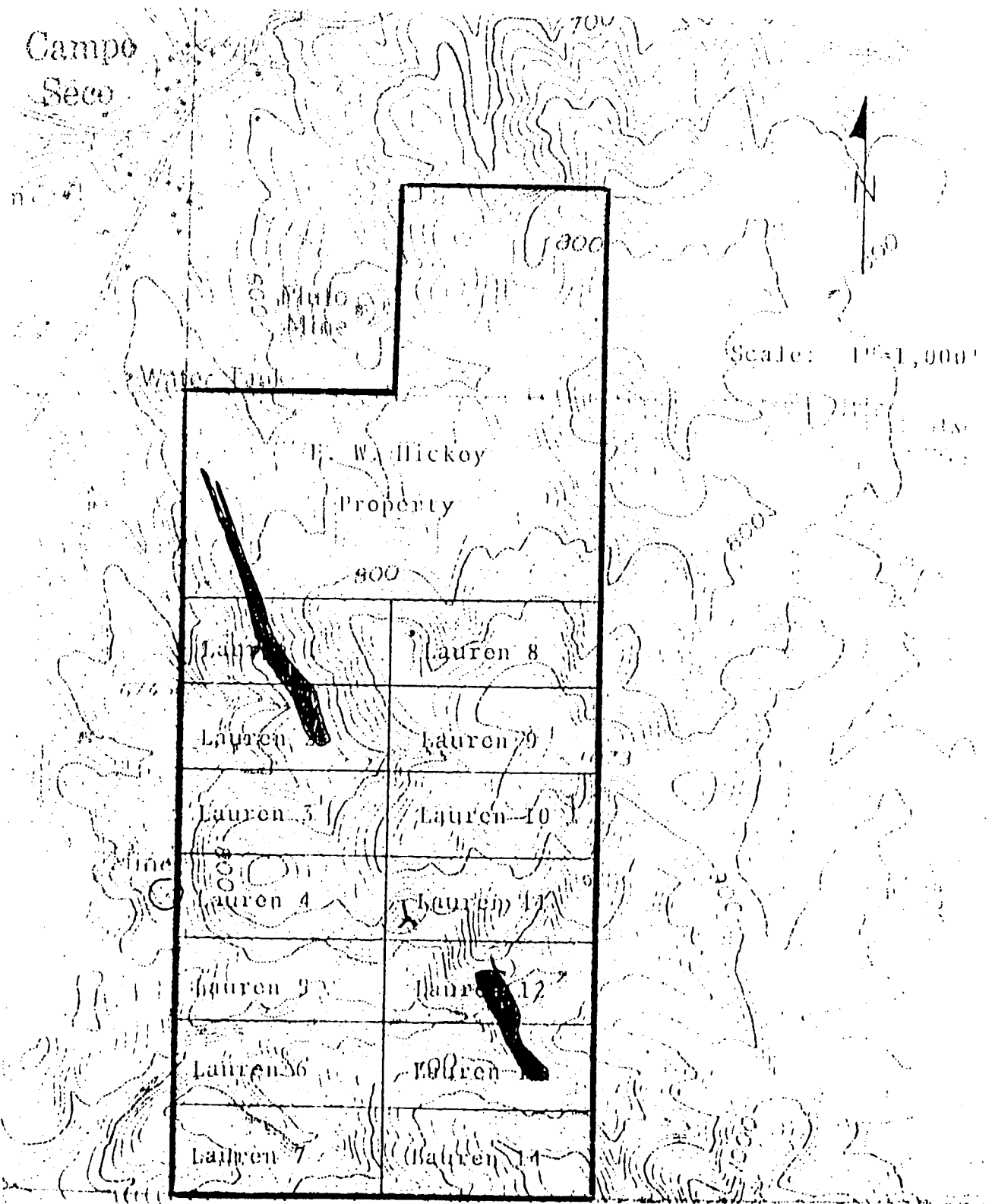
MARTELL

MARTELL

MARTELL

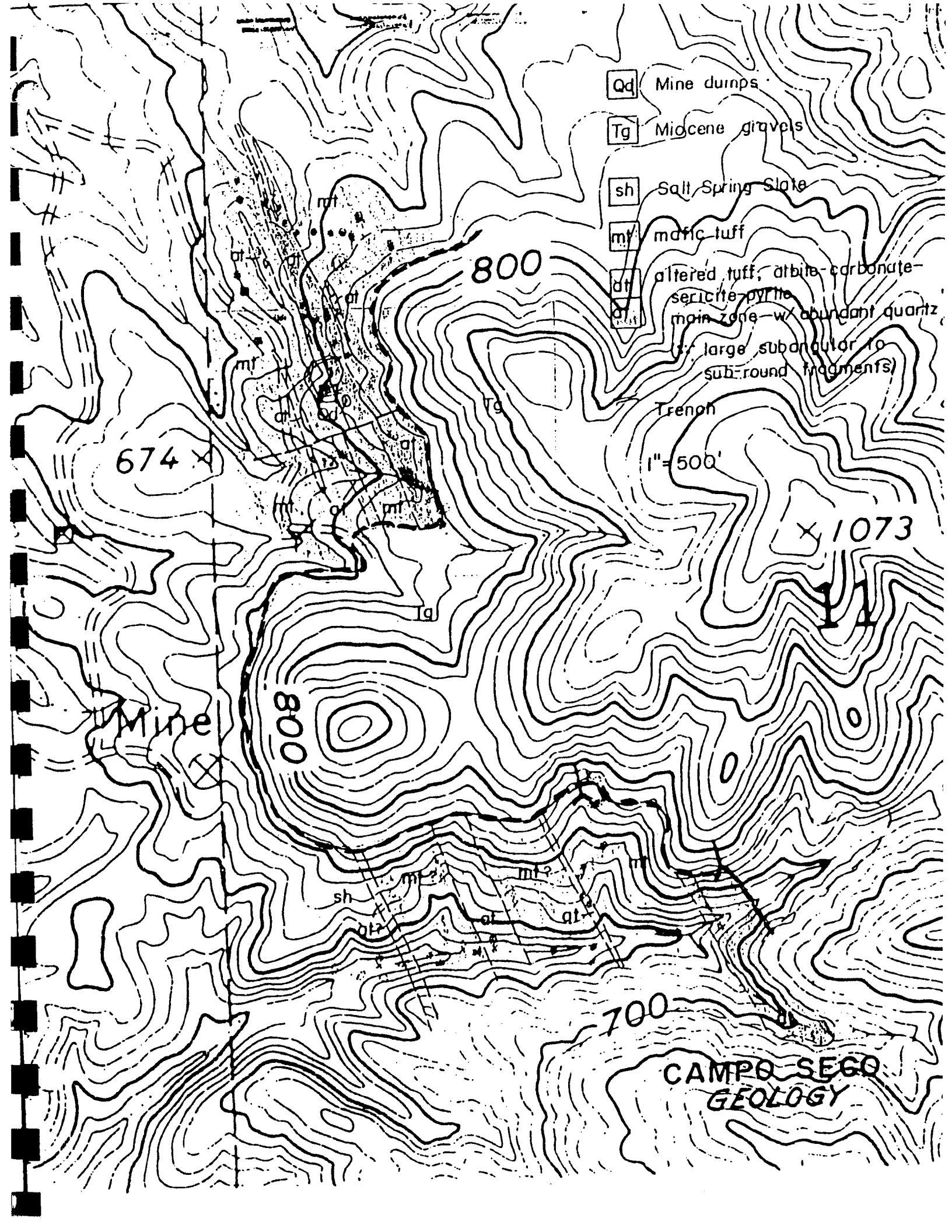
MARTELL

Campo
Seco



Northwest-trending zone of quartz veins and altered country rock. Intervening ground between north and south segments covered by Tertiary gravels. Modified after GIMC preliminary geologic map of Campo Seco project.

Figure 2



Qd

Mine dumps

Tg

Miocene gravels

sh

Salt Spring Slate

mf

mafic tuff

at

altered tuff, albite-carbonate-sericite-pyrite
main zone - w/ abundant quartz
(large subangular to sub-round fragments)

Trench

1" = 500'

674 x

x 1073

Mine

CAMPO SEGO
GEOLOGY

pertinent to the property was available from Gold Fields Mining Corp., and Callahan Mining Corp., and is utilized in the following report.

CLAIMS

The claims Lauren 1 to 14 are shown to be contiguous, and to cover most but not all of the pertinent mineralization (see accompanying map). Legal papers show the claims to be located in Section 11, Township 4 north, Range 10 east, Mt. Diablo Meridian. Title has not been checked by the writer, but appears to be in good order provided current annual labor is completed and recorded. Mineralization in the quartz zone north of the claims is low grade.

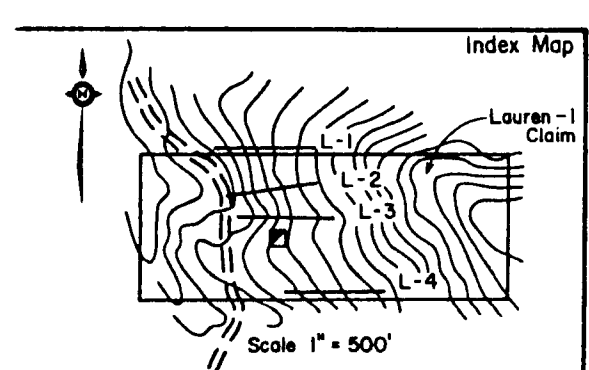
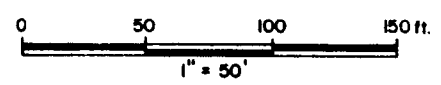
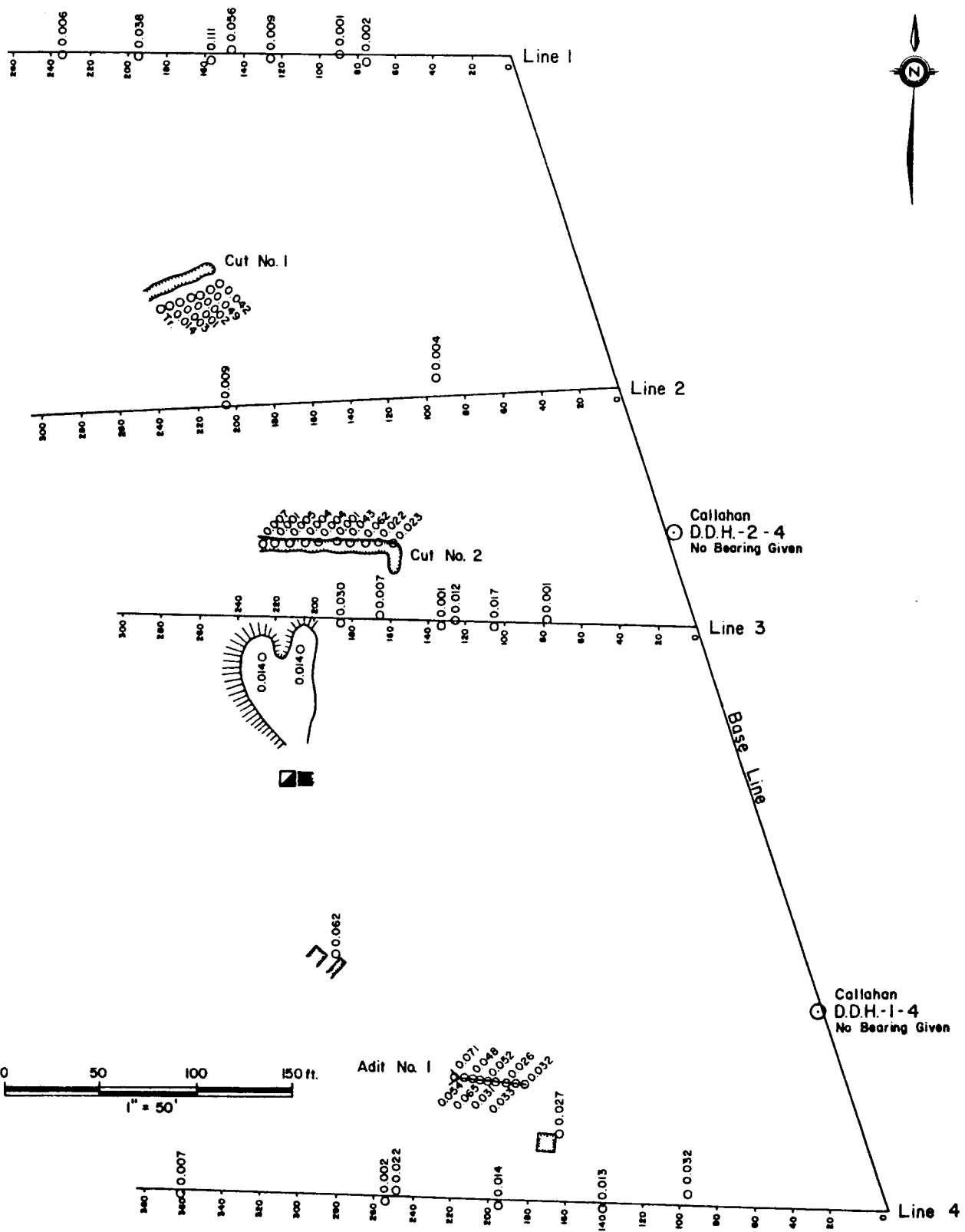
LOCATION AND ACCESS

The claims are located 15 miles northwest of San Andreas, California and are accessible from the main Grass Valley Highway as shown on the accompanying maps. Inasmuch as several new mines, including Grandview's 'Carson Hill', are in or near operation, mining facilities are again locally available in this historically important belt of gold mines.

GEOLOGY

The mineralized zones at Campo Seco are located west of those in the main Motherlode Belt, and are of a different nature. Abundant quartz with gold is exposed in two zones, northwest of and southeast of a ridge of Tertiary conglomerate. Presumably the mineralized quartz will be found to extend under the conglomerate cap, but high stripping ratio probably precludes economic viability under the cap.

The quartz lode where exposed has about 100 feet maximum width, about 1,900 feet of length northwest of the conglomerate 'cap', and about 600 feet of length south of it.



NORTH ZONE

○ Gold Value - oz. per ton
 Map By : F.W. Mack
 Sampling By : S. Harlow
 Date : May 1987

STRONGBOW RESOURCE COR
CAMPO SECO GOLD PROSPECT
CALAVERES COUNTY - CALIFORNIA
Rock Geochemistry - GOLD

Discovery Post
Lauren Mining
Claim 4

from Discovery Post
Lauren Claim 4
south 400' to
7 +.00 L-5

Foliated Schist
minor SiO₂
Vng

Cont. foliated
MV (No SiO₂)

Highly foliated
bleached sericite
schist

Schist w/ho
SiO₂ (sample)

Felsic Tuff
float

Conglomerate

White (bleached)
sericite schist
(MV)

Bleached beige colored
schist, thin lam. w/
occas. SiO₂ Vng

Approximate
Boundary
Mineralized
Belt

Scid S'
floor,

X-cut projected
to surface

0.087

0.046

0.014

Tunnel 4

Tunnel 5

0.080

0.057

Tunnel 6

0.021

MV Foliated Schist

Conglomerate

Foliation w/dip

Gold Values in 0.010 Ounces /ton

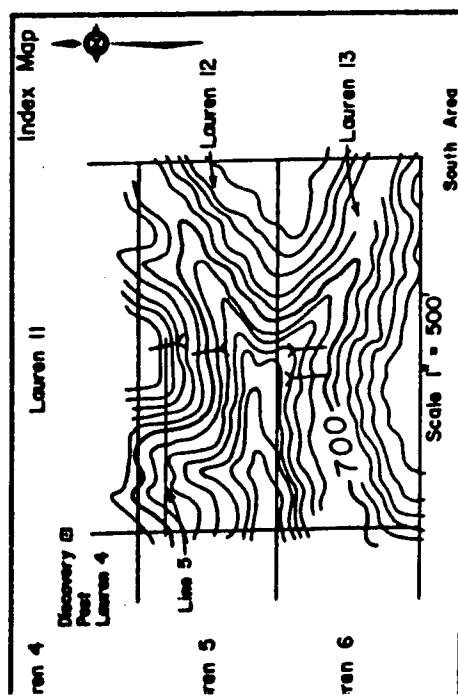
Adit

Shaft

Map By : F. W. Mock

Sampling By : S. Harlow

Date : May 1987



STRONGBOW RESOURCE CORP
CAMPO SECO GOLD PROSPECT
CALAVERES COUNTY - CALIFORNIA
Geology - Geochemistry
South Area.

The gold-quartz zones are emplaced in a series of andesite, dacite, and basaltic rocks that have been identified as tuffs, flows and sill. Minor phyllite is present.

MINERALIZATION

Mineralization includes pyrite, minor chalcopyrite accompanied by carbonate and sericite alteration. The maps on the following pages show the available results of surface sampling for gold.

DIAMOND DRILLING

Two holes were completed in November - December 1985 by Callahan Mining Corp. Locations are shown on the map "Rock Geochemistry - Gold" by Strongbow Resource Corporation; bearings are not provided, but the holes are assumed to be drilled westerly:

DDH1 - inclination 61 degrees to 45 degrees

Summary

0 - 75.6	-	meta-andesite - clastics and sill?
75.6 - 135	-	quartz veins with gold assays
75.6 - 80.6	-	0.027 oz
83.8 - 87.9	-	0.024
93 - 99	-	0.023
102.2 - 103.9	-	0.030
128 - 133	-	0.018
133 - 135	-	0.017
135 - 420	-	fewer quartz veins in 'mafic tuffs' with
177 - 178.5	-	pyrite chalcopyrite mineralization
198 - 200.5	-	0.014 oz gold
213 - 215.5	-	0.035 oz gold

DDH2 - inclination 63 to 75°

Summary

0 - 142.5	-	meta-andesite - clastic, flow and or sill?
94.5 - 1320	-	several quartz veins not assayed
142.5 - 263.7	-	more abundant quartz veins in sill?
142.5 - 143	-	not assayed
145.5 - 146	-	not assayed
146.5 - 148	-	not assayed
148 - 153	-	0.05 oz Au
153 - 158	-	0.053 oz Au
158 - 161	-	0.030
166.9 - 171.9	-	0.015
176.8 - 179.6	-	0.10
208 - 213	-	0.033
213 - 216.7	-	0.110
233 - 238	-	0.025
238 - 240	-	0.018
248.8 - 250.3	-	not assayed
254 - 257	-	0.036
257 - 259.6	-	0.028
263.7 - 274	-	mafic metavolcanic (tuff?)

BIBLIOGRAPHY


Only a few pages of intercorporate information are available, and are confidential.

CERTIFICATION

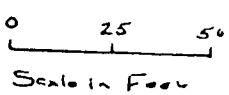
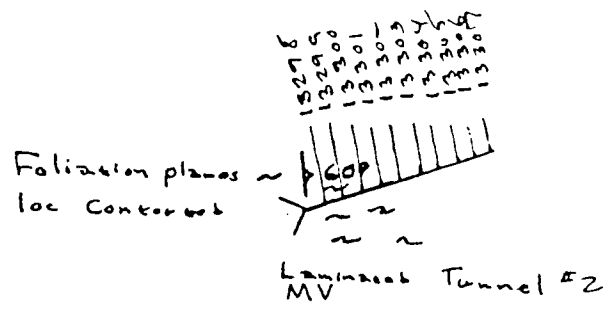
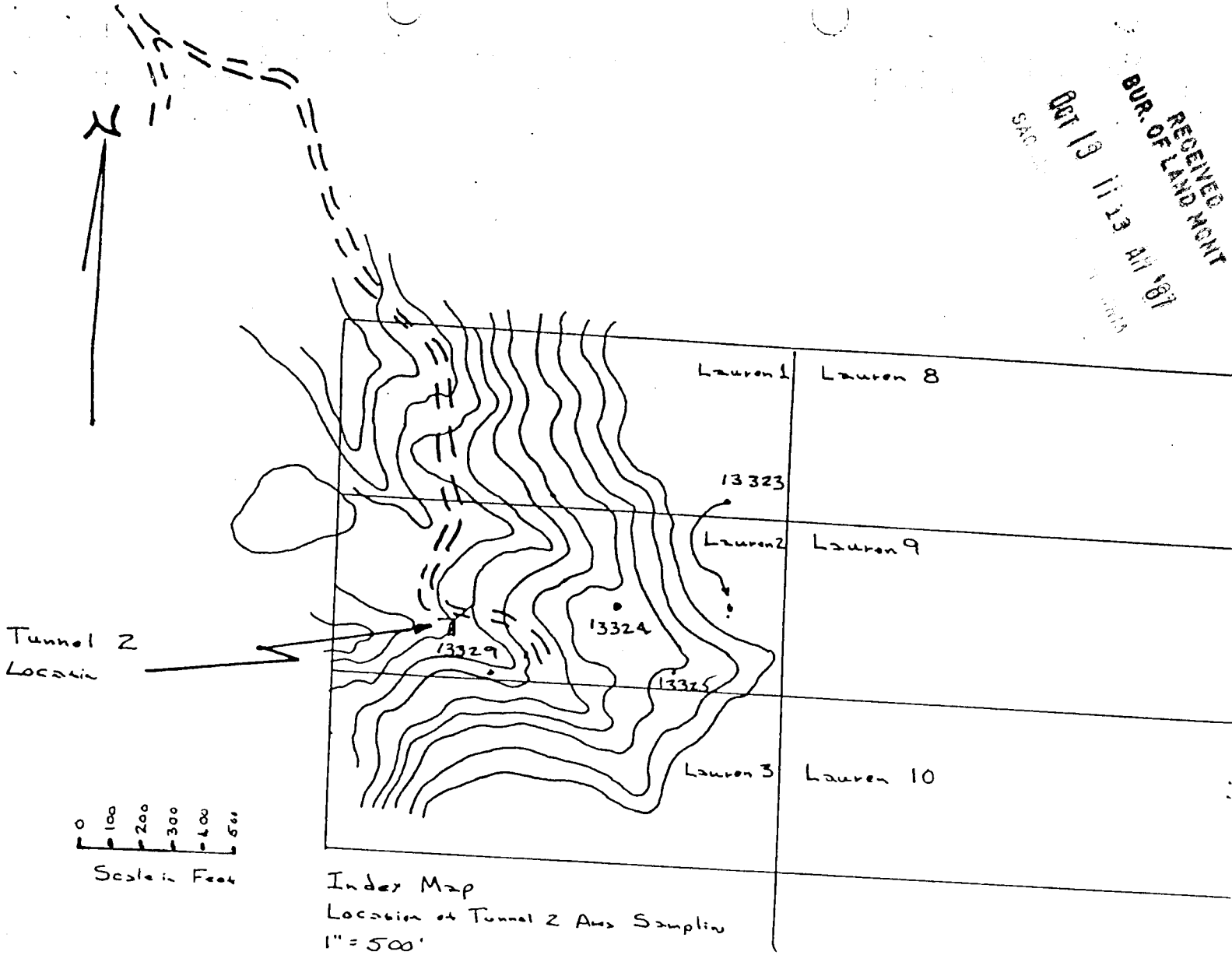
I, Dr. R.H. Seraphim, of the City of Vancouver, Province of British Columbia, hereby certify as follows:

1. I am a Geological Engineer residing at 4636 West 3rd Avenue, Vancouver, B.C., and with office at #316 - 470 Granville Street, Vancouver, B.C.
2. I am a registered Professional Engineer of British Columbia. I graduated with a Master of Applied Science from the University of British Columbia in 1948, and with a Doctor of Philosophy in geology from the Massachusetts Institute of Technology in 1951.
3. I have practised my profession continually since graduation.
4. I have no interest, direct or indirect, in the claims of Strongbow Resource Corp., and will not acquire any interest in the claims, the Company, or its affiliates.
5. The attached report is based on a study of maps sections, and reports and an on site examination on April 10, 1987.
6. I consent to the use of this report in or in connection with the prospectus or in a statement of material facts relating to the raising of funds for this project.

DATED at Vancouver, British Columbia, this 16th day of December, 1987.


R.H. Seraphim, Ph.D., P. Eng.

RECEIVED
 BUR. OF LAND RIGHT
 OCT 13 11 13 AM '87
 SAC



~
 ~
 Mesavolcanic
 Laminates

Adit ± 15' long
 Conglomerate

Campo Seco Project
 Calaveras County, CA
 Scale 1" = 50'
 Map & Geology By: F.W. Mark
 Sampling By: B. Harlow
 May 1987

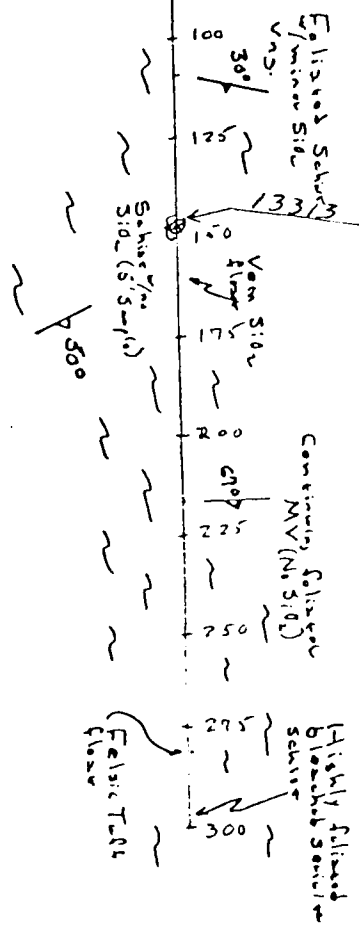
RECEIVED
BUR. OF LAND RIGHT
OCT 19 11 33 AM '07
SACRED

Discovery Post
Lauren Mining
Claim # 4

Discovery Post
South 400' to
0+00 L-5

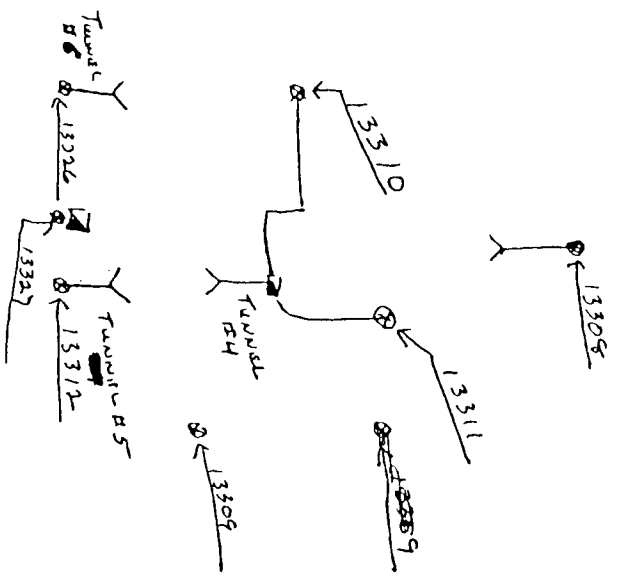
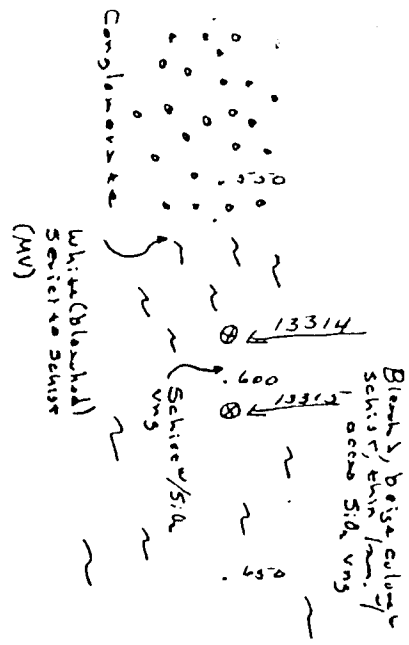
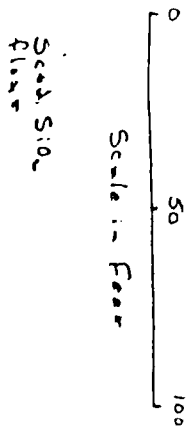
Line 5

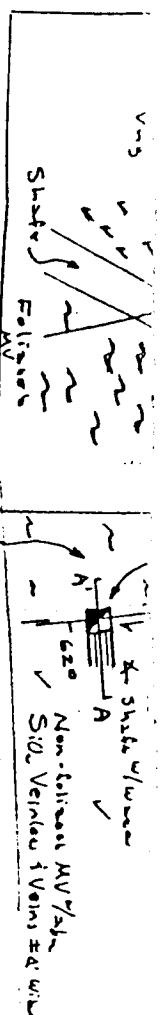
Lauren Claim Block



RECEIVED
BUR. OF LAND MGMT
OCT 19 11 13 AM '87
SACRAMENTO COUNTY, CALIFORNIA

Campo Seco Project
Calaveras County - CA
South Area
Map By: F. W. Melt
Sampling By: S. Harlow
May 1987
Scale: 1" = 50'



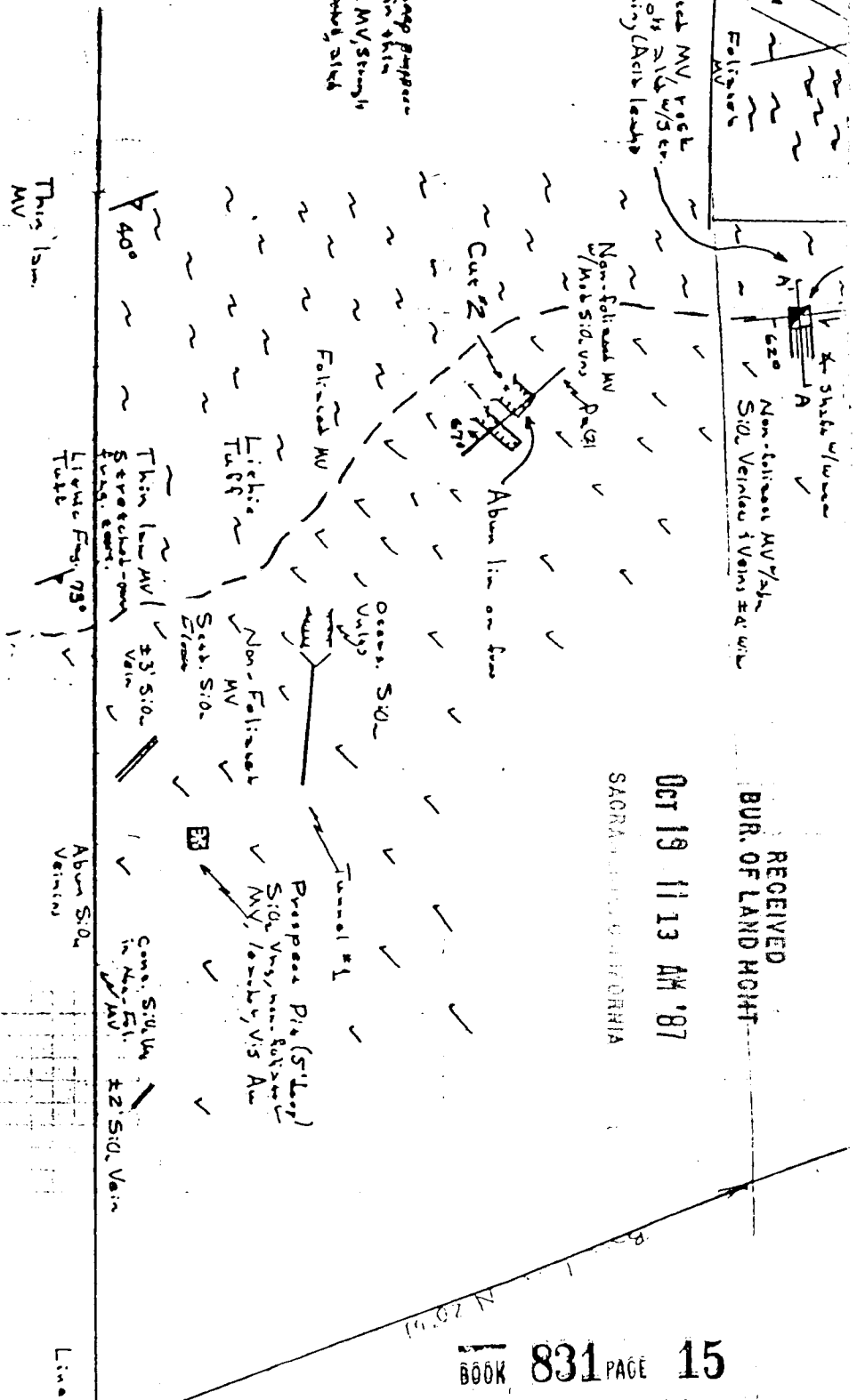


Foliated MV, rock
5' from top, 2 1/2' w/5' cr.
bleeding (Acid leach)

Non-foliated MV
/ Mob S.O. vns. Pat 91

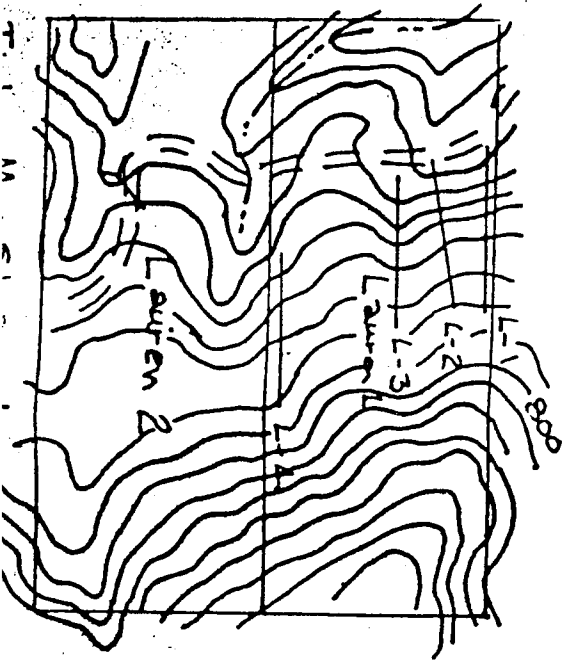
Abum line on floor

± 1' deep prospect
pit in 4th
level MV, strength
at least, 2' thick



Legend

- Foliated Mesozoic (MV)
- Non-foliated Mesozoic
- Open Cur
- Prospect Pit
- Inclined Shaft
- Adit



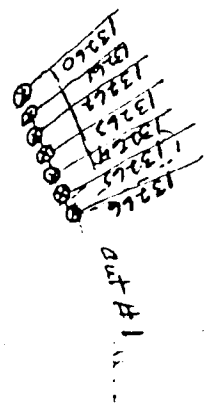
RECEIVED
BUR. OF LAND HOIST

OCT 19 11 13 AM '87

SACRAMENTO, CALIFORNIA

Grandview Resources, Inc
Geologic Map
Campo Seco Project
Calaveras County, CA
Scale: 1" = 50'
Geology By: F. W. Mack
May 1987

13258 - 275
 - 250
 13257 - 225
 - 200
 13256 - 175
 13255 - 150
 13254 - 125
 13253 - 100
 13252 - 75
 13251 - 50
 25
 100
 150
 200
 225
 250
 275
 300



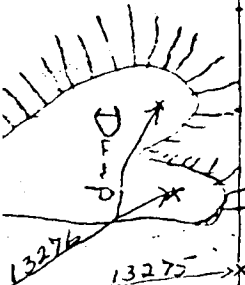
13267 - 300
 275
 250
 225
 200
 175
 150
 125
 100
 75
 50
 25
 0 L-2

13287
 13288
 13289
 13290
 13291
 13292
 13293
 13294
 13295
 13296
 13297

300
 275
 250
 225
 200
 175
 150
 125
 100
 75
 50
 25
 0 L-3

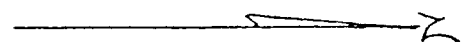
13276
 13275
 13274
 13273
 13272
 13271
 13270

DDH-2



Base
 50 L-1

RECEIVED
 BUR. OF LAND MGMT
 SACRAMENTO, CALIFORNIA
 OCT 19 11 13 AM '87



Scale 1"=50'

RECEIVED
BUR. OF LAND MGMT

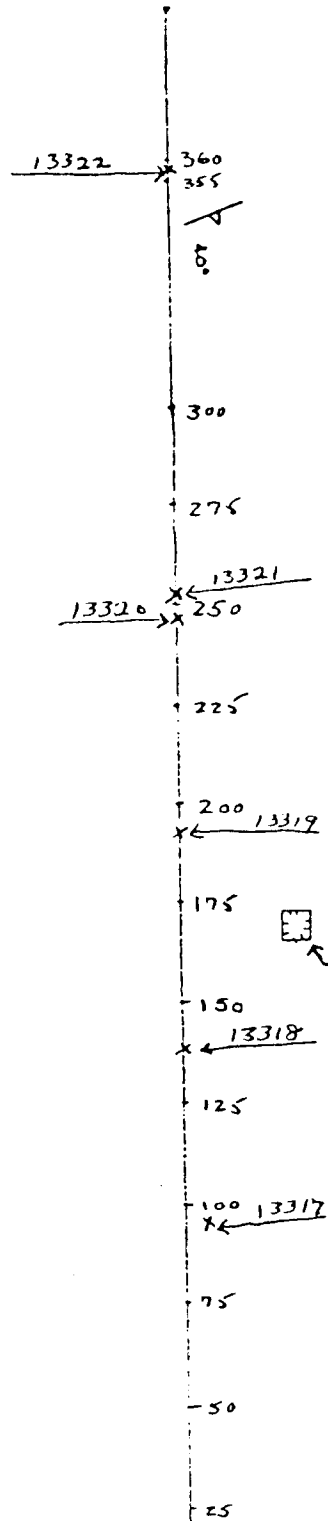
OCT 19 11 13 AM '87

SACRAMENTO COUNTY

CUT # 3
13277

- 13275
- 13279
- 13290
- 13281
- 13282
- 13283
- 13284
- 13285
- 13286

Area #1



DDH-1

Campo Seco Project
 Calaveras County, CA
 Map By F.W. Mault-Sampling S.H. Hart
 Survey: Brunson, Hip Chasin
 May 1987